

Sector 1 Daily Wildfire Hazard Report

Station	Stn Start Type	RS	Date	OT	Temp	RH	Dir	WS	AdWS	Rain	FFMC	DMC	DC	ISI	BUI	FWI
APK	Official	E01	May 29, 2023 1:00:00 PM	Actual Observation	25.0	22	293	6.5	6.5	0.0	95	38	61	12.2	38	22
APW	Official	E01	May 29, 2023 1:00:00 PM	Actual Observation	24.0	31	45	6.0	4.8	0.0	93	32	62	8.1	32	15
BAN	Official	E01	May 29, 2023 1:00:00 PM	Actual Observation	25.1	26	114	6.9	6.9	0.0	94	41	84	11.0	40	21
BRA	Official	E01	May 29, 2023 1:00:00 PM	Actual Observation	27.8	27	92	7.8	4.7	0.0	93	42	58	8.3	42	18
GAL	Official	E01	May 29, 2023 1:00:00 PM	Actual Observation	26.8	23	48	8.2	8.2	0.0	95	46	83	13.0	45	26
HBN	Official	E01	May 29, 2023 1:00:00 PM	Actual Observation	26.0	34	0	0.0	0.0	0.0	92	39	88	5.7	39	13
PLE	Official	E01	May 29, 2023 1:00:00 PM	Actual Observation	23.8	36	80	9.7	5.8	0.0	92	36	89	8.1	36	16
PNF	Official	E01	May 29, 2023 1:00:00 PM	Actual Observation	23.1	30	43	7.0	7.0	0.0	94	42	109	10.1	43	21
TRA	Official	E01	May 29, 2023 1:00:00 PM	Actual Observation	25.0	27	67	8.5	7.6	0.0	95	42	96	12.1	42	23
TWD	Quick Deploy	E01	May 29, 2023 1:00:00 PM	Actual Observation	24.0	37	45	13.0	13.0	0.0	91	28	93	9.8	32	17

FFMC – Fine Fuel Moisture Code - numerical rating of moisture content of litter and other cured fine fuels (0 to ¼” or 6 mm in diameter) – **how easily fires can ignite**

DMC – Duff Moisture Code – numerical rating of moisture content of upper duff layer (up to 10 cm deep) and medium fuels (1/4” – 2” (0.6c, - 5 cm)) – **depth of burn indicator**

DC – Drought Code – numerical rating of moisture content of deep, compact organic layers (below 10 cm deep) and dead woody materials > 2” (5 cm) in diameter – **commitment indicator**

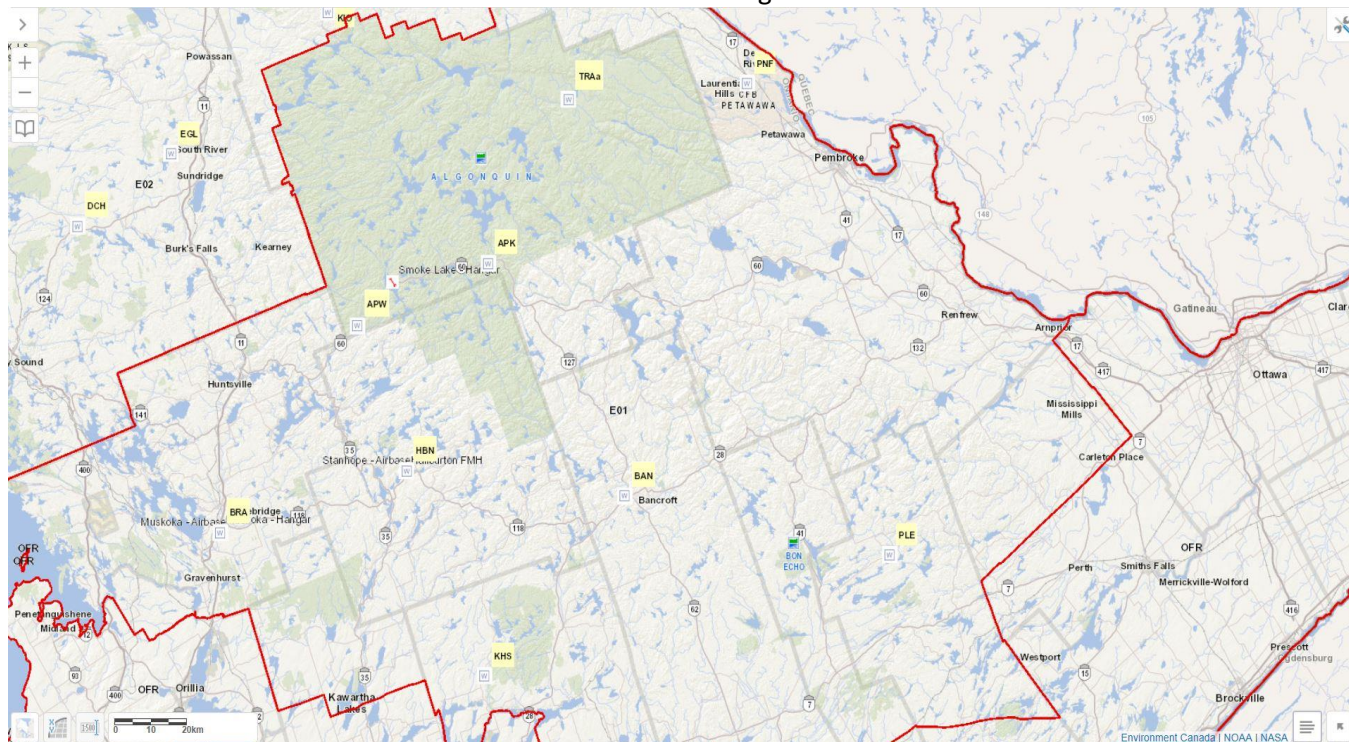
ISI – Initial Spread Index – numerical rating of **expected rate of fire spread** (0-10+)

BUI – Buildup Index - numerical rating of total **amount of fuel available for combustion** (combines DMC and DC)

FWI – Fire Weather Index – numerical rating (combines ISI and BUI) – **general indicator of current fire danger rating**

Fire Weather Index Classes						
	FFMC	DMC	DC	ISI	BUI	FWI
LOW	0 – 80	0 – 15	0 - 140	0 – 2.2	0 – 20	0 – 3
Moderate	81 – 86	16 – 30	141 - 240	2.2 – 5.0	21 – 36	4 – 10
High	87 – 90	31 – 50	241 - 340	5.1 – 10.0	36 – 60	11 - 22
Extreme	91+	51+	341+	10.1+	61+	23+

L-Low M-Moderate H-High E-Extreme



For more information on the fire situation please visit: <https://www.ontario.ca/page/fire-intensity-codes> or call the sector response officer. Note: Sector 1 is located within the Northeast Region (NER)

Burning Restrictions or Municipal Fire Bans:

Haliburton Sector Response Officer (SRO): **(705) 754-1902 Ex 1**
After hours:
Northeast Region (NER) Forest Fire Reporting Hotline **310-FIRE (3473)**